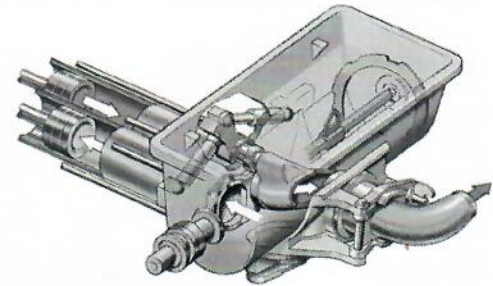
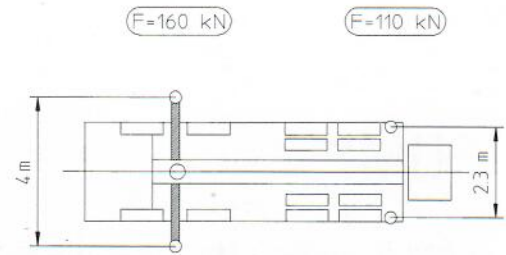
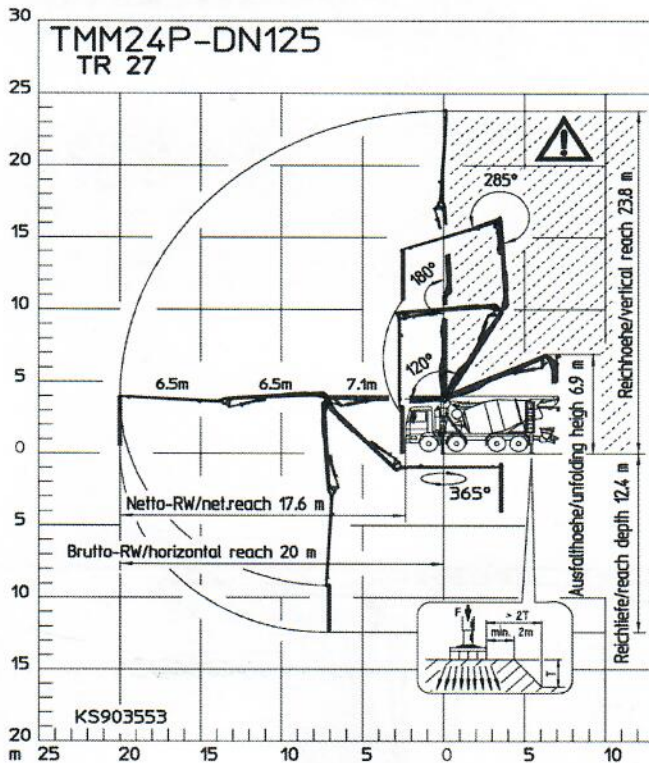


Reach information diagram, Support, Transfer tube



Range in which you must not work with the end hose.

Delivery scope

Support

- Support legs T 4
- Support plates 4 x in 2 magazines

Illumination

- Marker lamps lateral and rear side, EU
- Working light for hopper illumination, mounted / hand working search light

Extras

- Operating manuals 2 x (1 x paper, 1 x CD-ROM) spare part lists
- Painting: mixer MB 1227 chrome yellow, pump MB 1227 chrome yellow, arm assembly RAL 3020 signalred
- Tool set incl. standard equipment
- Chassis horn operated in control box
- Compressed air connection
- Towing eye
- Lattice box rear side

Remote control

- Radio remote control fully prop.
- Mixer-comfort-functions through display radio remote
- Remote control CPC with 25 m cable
- Control platform with display, rear side
- Electric control box with display and ergonomic diag. interface

EOC (Ergonic output control)

- EPS (Ergonic pump system)
- Information concrete stiffness on display
- Mixer control via chassis cabin with display

Delivery line

- Delivery line (1-layer) PM 40 (DN 125 5.5"), arm assembly
- End hose 3.0 m DN 125 5.5"

Mixing drum

- Truck mixer 7 cbm
- Water tank 650 l, pressure tank
- Water tap under water tank
- Chute extension steel 1 x
- Ladder, telescopic

EMC (Ergonic mixer control)

- Mixer discharge automatically
- Chute adjustment hydr. elec.
- Second drip ring on mixer drum
- Watertank filling from both sides

Wear plate on discharge hopper

- Wear plate on inlet hopper
- Discharge chute for hinged steel

Cleaning

- High pressure water pump 100bar with running dry connection

Cleaning hose with nozzle

- Bracket for hammer and cleaning brush
- Cardan shaft maintenance free
- Splashguard on hopper (sheet steel and rubber) and over core pump

Safety

- Agitator safety switch off
- Lateral underrun protection
- Underrun protection, rear side
- Mudgard cpl. aluminium (bulb plate), rear axle
- Rear lights and number plate fixed on hopper

Stowage compartment

- Hose bracket for 6 x DN 65 5 m for 4-axle
- Tool box plastic

Hopper

- Concrete hopper with agitator
- Rubber collar on concrete hopper
- Central lubrication hopper, electrically
- Level indicator
- Agitator with mixing paddle
- Grid with traverse batons
- Hopper backed with wear steel sheets
- S-valve inner welded

See quotation for exact serial delivery scope. Comprehensive range of options available on request.