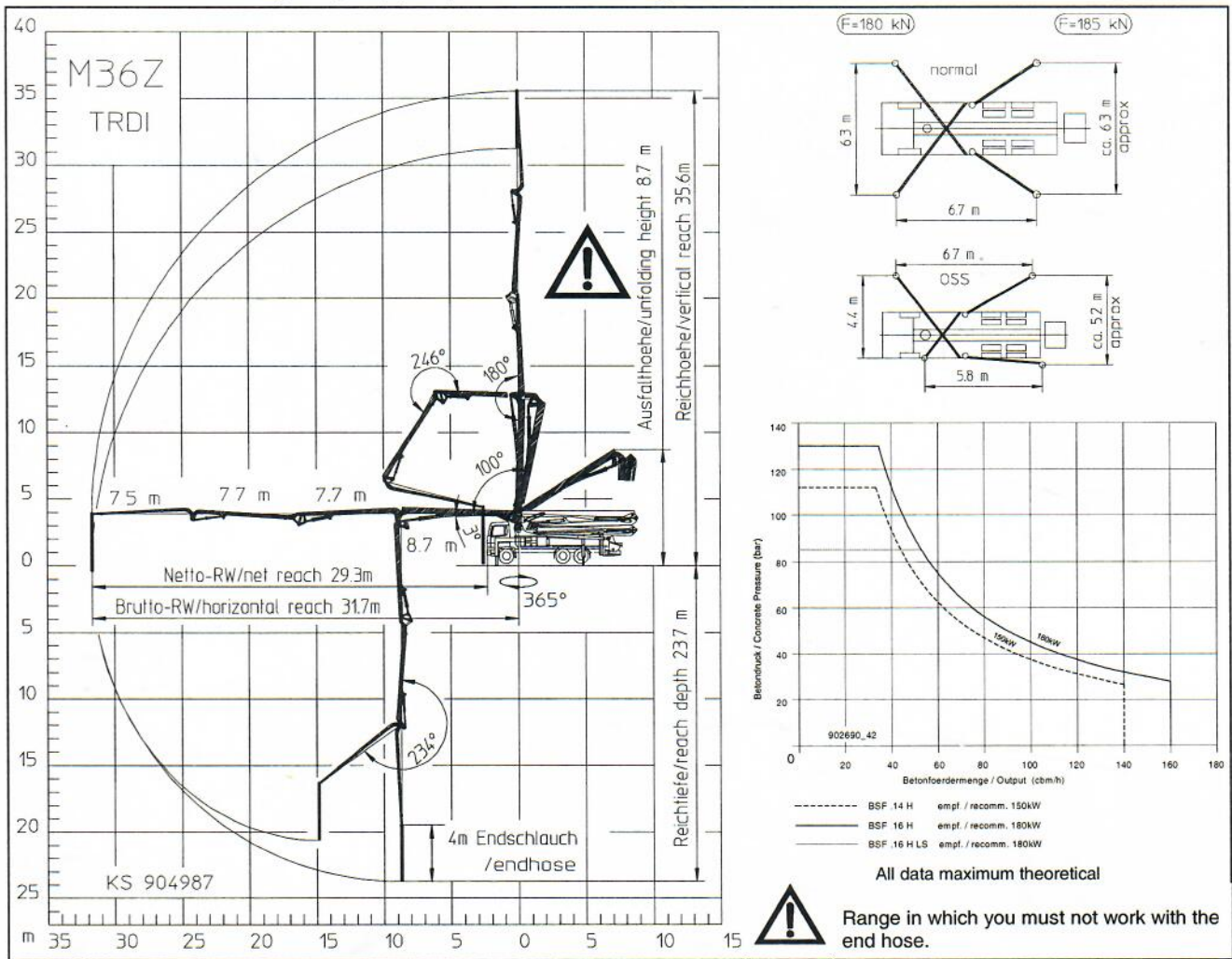


## Reach information diagram, Support, Performance diagram



### Delivery scope

|   | Standard | Options Package * | Options Package Plus |
|---|----------|-------------------|----------------------|
| support plates 4x in magazine                           | ●        |                   |                      |
| concrete hopper RS 900 with agitator                    | ●        |                   |                      |
| diagnose interfaces, central for electric and hydraulic | ●        |                   |                      |
| EOC (Ergonic output control)                            | ●        |                   |                      |
| EPS (Ergonic pump system)                               | ●        |                   |                      |
| EGD (Ergonic Graphic Display)                           | ●        |                   |                      |
| radio remote control with display                       | ●        |                   |                      |
| remote control with 40 m cable                          | ●        |                   |                      |
| central lubrication strip hopper                        | ●        |                   |                      |
| rubber collar   | ●        |                   |                      |
| painting: arm assembly RAL 3020 signalred               | ●        |                   |                      |
| painting: pump MB 1227 chrome yellow                    | ●        |                   |                      |
| flushing water pump 160 l/min 25 bar                    | ●        |                   |                      |
| water tank  | ●        |                   |                      |
| concrete line DN125/5.5, 133x4                          | ●        |                   |                      |
| concrete line DN125/5.5, PM 22 twin layer               |          | ●                 |                      |
| concrete line DN125/5.5, PM 252 Proline                 |          |                   | ●                    |

|  | Standard | Options Package * | Options Package Plus |
|--|----------|-------------------|----------------------|
| support plates 4x + timber wood 8x600 in magazine        |          | ●                 | ●                    |
| traffic permission kit                                   |          | ●                 | ●                    |
| splash guard foldable                                    |          | ●                 | ●                    |
| lighting in toolbox                                      |          | ●                 | ●                    |
| central lubrication hopper, electrical                   |          | ●                 | ●                    |
| horn at the boom   |          | ●                 | ●                    |
| working search light on boom for hopper illumination     |          |                   | ●                    |
| spotlights 4x for illumination support area              |          |                   | ●                    |
| flashlights for 4 support legs front and rear            |          |                   | ●                    |
| high pressure water pump 100 bar with dry-run protection |          |                   | ●                    |
| vibrator, electrical                                     |          |                   | ●                    |
| hard metal wear parts kit                                |          |                   | ●                    |

\* recommended in Europe

special: Ergonic Boom Control EBC  
One Side Support OSS

Please see quotation for exact serial delivery scope.